

**FRESATRICE  
ROTARY TILLER  
FRASE  
FRAISE**

**CE**

**093.133.3**

**CATALOGO RICAMBI  
SPARE PARTS CATALOGUE  
ERSATZTEILKATALOG  
CATALOGUE DE PIECES DETACHEES**



**1955**

**Celli S.p.A.** Via Masetti, 32 - 47122 Forlì (Italy)  
Tel. 0543 794711 - Fax. 0543 794747  
[www.celli.it](http://www.celli.it)



### Avvertenze importanti

Per ordinazioni di parti di ricambio è necessario indicare sempre i seguenti dati:

- modello della macchina,
- numero di matricola,
- codice del particolare,
- denominazione corrispondente,
- numero dei pezzi,
- istruzioni per le spedizioni.

Solo seguendo queste norme sarete sicuri di una sollecita evasione dell'ordine.

Qualora manchino i dati sopraindicati oppure sussistano dubbi sulla scelta del particolare di ricambio, per evitare disguidi, è consigliabile corredare l'ordine di tutte le informazioni possibili o recapitarci il pezzo avariato.

### Important

When ordering spare parts please, quote:

- model of the machine,
- serial number,
- spare part code number,
- description,
- quantity,
- forwarding instructions.

Only following this procedure will you secure a prompt service. Should you not be able to supply any of the details listed above or should there be any doubt regarding the type of spare parts required, please enclose with order supplementary information and description or, when possible, send damaged part.

### Avertissements importants

Pour des commandes de pièces de rechange il est nécessaire d'indiquer toujours les suivantes données:

- modèle de la machine,
- numéro de série,
- code de la pièce,
- dénomination correspondante,
- nombre de pièce,
- instructions pour les expéditions.

C'est seulement en suivant ces normes que vous aurez d'une prompte exécutions de l'ordre.




Au cas où il manquerait les données ci-dessus indiquées ou bien s'il subsiste des doutes, pour éviter tous risques il est conseillé de communiquer avec l'ordre tous les renseignements possibles ou de nous faire parvenir la pièce endommagée.

### Wichtig:

Bei Bestellungen von Ersatzteilen ist folgendes zu beachten:

- Modell der Maschine,
- Serien-Nummer der Maschine,
- zusätzliche Bezeichnungen,
- Code-Nummer des Ersatzteiles,
- Anzahl der Ersatzerte,
- Anweisungen für den Versand.

Die Auslieferung kann nur dann erfolgen, wenn all die obengenannten Anweisungen befolgt worden sind. Falls gewisse Angaben fehlen oder Zweifel bestehen, bitte defekte Teile einsenden.

<b>CELLI S.p.A.</b> Via Masetti 32 47122 FORLI' - ITALIA <a href="http://www.celli.it">www.celli.it</a>		
<b>Mod.</b>	<input type="text"/>	
<b>N°</b>	<input type="text"/>	
<b>Kg</b>	<input type="text"/>	<b>Made in Italy</b>
<b>Anno</b>	<input type="text"/>	
Lubrificanti raccomandati Recommended lubricants Lubrifiants recommandés Empfohlene schmiere		

### IDENTIFICAZIONE DELLA MACCHINA

Il modello ed il numero di matricola sono riportati sulla targhetta metallica fissata al cofano della macchina.

N.B.: Per ogni richiesta precisare sempre i dati: modello e numero di telaio.

### IDENTIFICATION

Type and size of machine and serial number are stamped on the metal plate fixed on the top of the main frame; they should be quoted when asking for spares or information.

### IDENTIFICATION DE LA MACHINE

Le modèle et le numéro de série sont reportés sur la plaquette métallique fixée sur la machine.

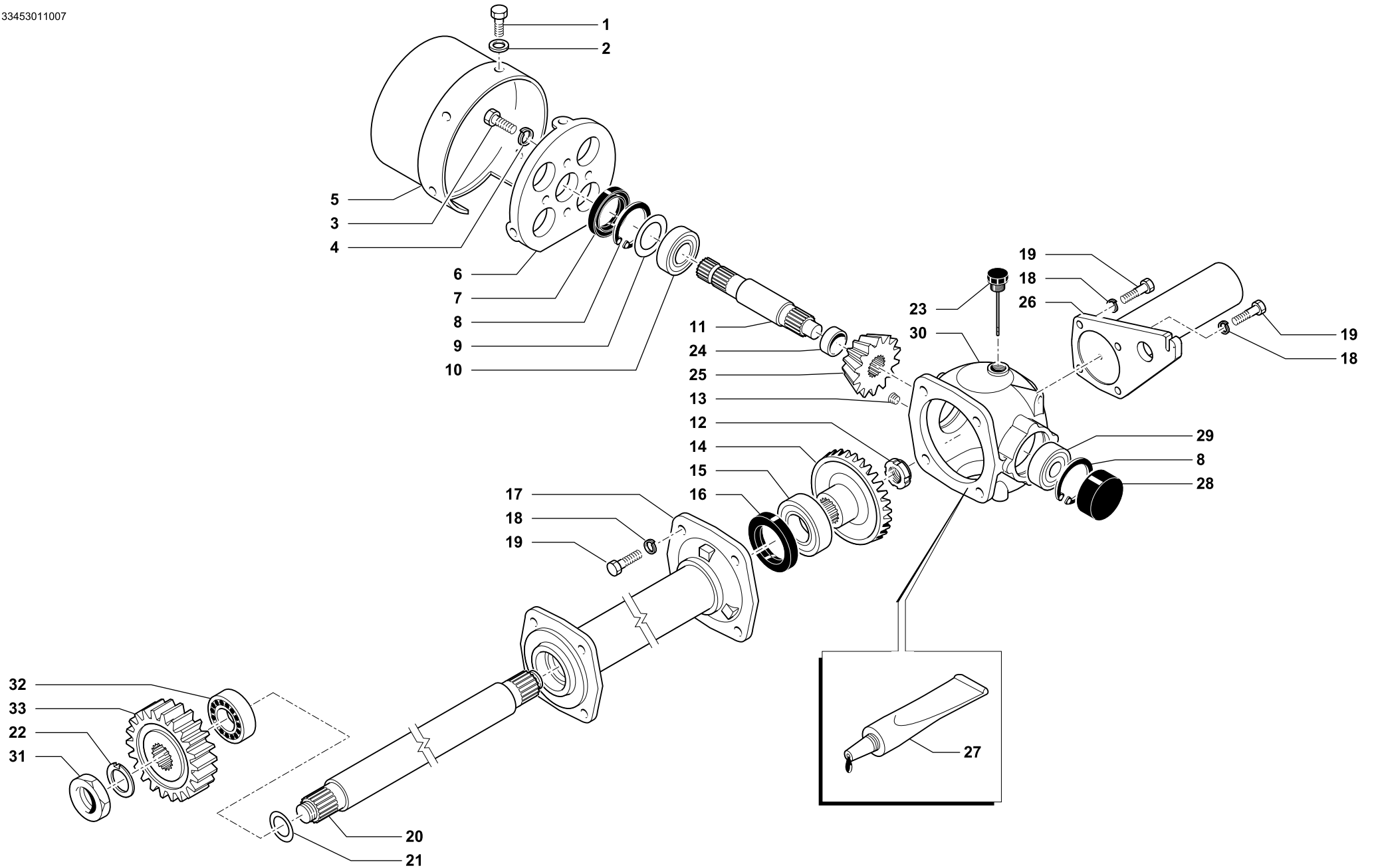
N.B.: Pour demande préciser toujours les données: modèle et numéro de série.

### IDENTIFIKATION DER MACHINE

Typ und Serien-Nummer sind auf das Schild an der Schutzhaube der Maschine zu übertragen.

N.B.: Bei Anfragen die Darten der Serien-Nummer und des Modell typs angeben.





SCATOLA CAMBIO 1 VELOCITA' • 1 SPEED GEARBOX  
1-GANG-WECHSEBADGETRIEBE • BOITE 1 VITESSE

Tav.  
Tab.  
Taf.

133.453

Rev.

01

1212



SCATOLA CAMBIO 1 VELOCITA' • 1 SPEED GEARBOX  
1-GANG-WECHSEBADGETRIEBE • BOITE 1 VITESSE

Tav.  
Tab.  
Taf.

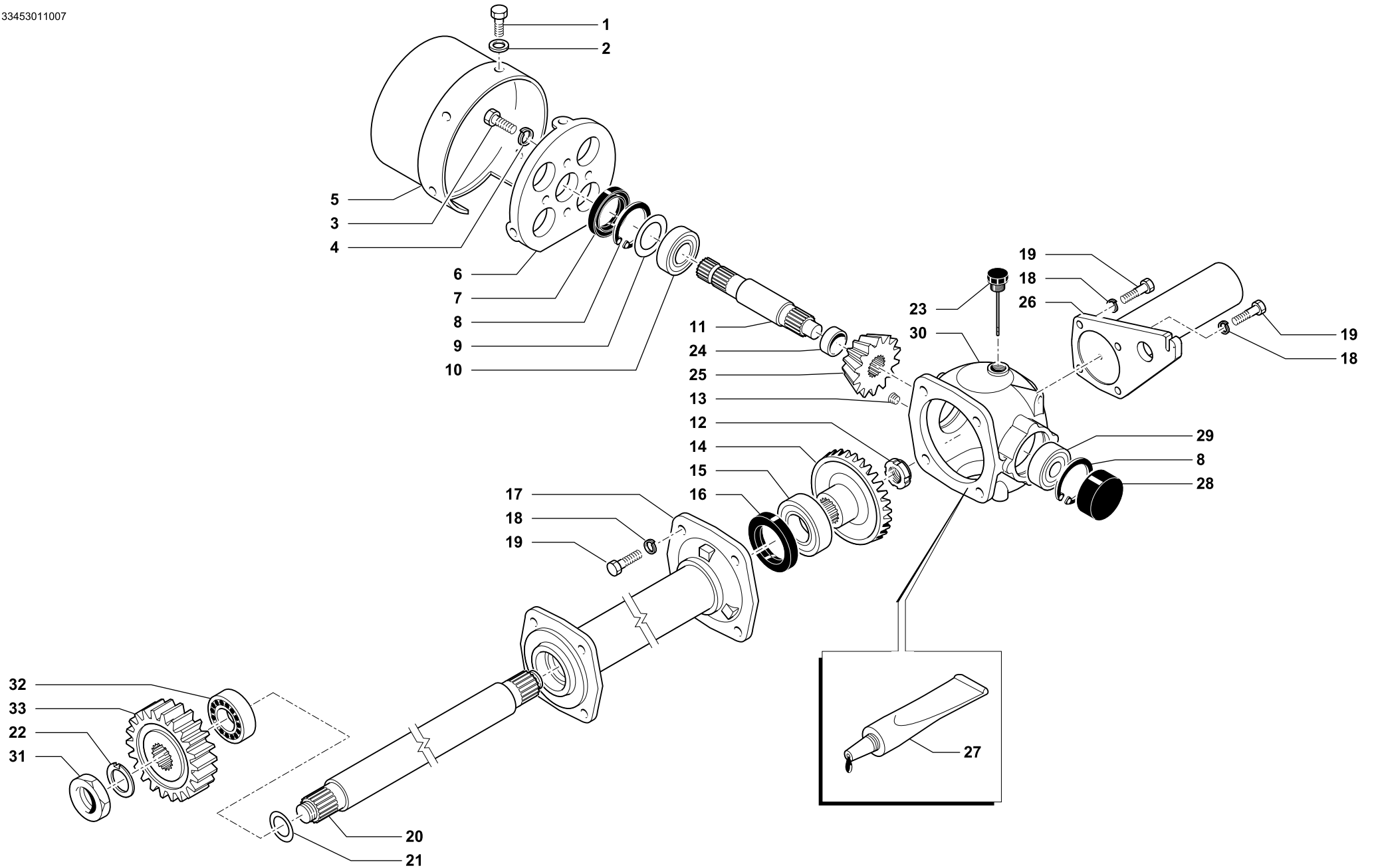
133.453

Rev.

01

1212

RIF.	CODICE	DESCRIZIONE	DENOMINATION	BEZEICHNUNG	DENOMINATION	
1	014284	Vite	Screw	Schraube	Vis	
2	010023	Rondella	Washer	Scheibe	Rondelle	
3	014278	Vite	Screw	Schraube	Vis	
4	011002	Grower	Grower	Federscheibe	Grower	
5	124505	Cuffia	Guard	Schütz	Protection	
6	161500	Supporto	Support	Halterung	Support	
7	007028	Paraolio	Oil seal	Simmerring	Joint huile	
8	001006	Anello arresto	Stop ring	Sperring	Bague d'arret	
9	001123	Serie spessori	Set spacers	Beilagscheiben	Serie d'epaisseurs	
10	003051S	Cuscinetto	Bearing	Kugellager	Roulement	
11	332500	Albero	Shaft	Welle	Arbre	
12	005007	Ghiera autobloccante	Ring nut	Nutmutter	Collier	
13	022009	Tappo	Plug	Verschluss	Bouchon	
14	331515	Corona	Crownwheel	Zahnkranz	Couronne	
15	003145	Cuscinetto	Bearing	Kugellager	Roulement	
16	007042	Paraolio	Oil seal	Simmerring	Joint huile	
<b>90</b>	17	336532	Distanziale L=250	Spacer	Distanzstueck	Entretoise
<b>105+115</b>		336533	Distanziale L=375	Spacer	Distanzstueck	Entretoise
<b>130</b>		336534	Distanziale L=500	Spacer	Distanzstueck	Entretoise
<b>155</b>		336535	Distanziale L=625	Spacer	Distanzstueck	Entretoise
<b>180</b>		336536	Distanziale L=750	Spacer	Distanzstueck	Entretoise
<b>205</b>		336538	Distanziale L=875	Spacer	Distanzstueck	Entretoise
	18	011035	Rosetta	Washer	Scheibe	Rondelle
	19	014145	Vite	Screw	Schraube	Vis
<b>90</b>	20	332532	Semiassa L=340	Axle shaft	Achswelle	Demi-axe
<b>105+115</b>		332533	Semiassa L=465	Axle shaft	Achswelle	Demi-axe
<b>130</b>		332534	Semiassa L=590	Axle shaft	Achswelle	Demi-axe
<b>155</b>		332535	Semiassa L=715	Axle shaft	Achswelle	Demi-axe
<b>180</b>		332536	Semiassa L=840	Axle shaft	Achswelle	Demi-axe
<b>205</b>		332538	Semiassa L=955	Axle shaft	Achswelle	Demi-axe
	21	001115	Rondella	Washer	Scheibe	Rondelle
	22	334519	Rondella	Washer	Scheibe	Rondelle



SCATOLA CAMBIO 1 VELOCITA' • 1 SPEED GEARBOX  
1-GANG-WECHSEBADGETRIEBE • BOITE 1 VITESSE

Tav. **133.453**  
Tab.  
Taf.

Rev. **01**

**1212**



SCATOLA CAMBIO 1 VELOCITA' • 1 SPEED GEARBOX  
1-GANG-WECHSEBADGETRIEBE • BOITE 1 VITESSE

Tav.  
Tab.  
Taf.

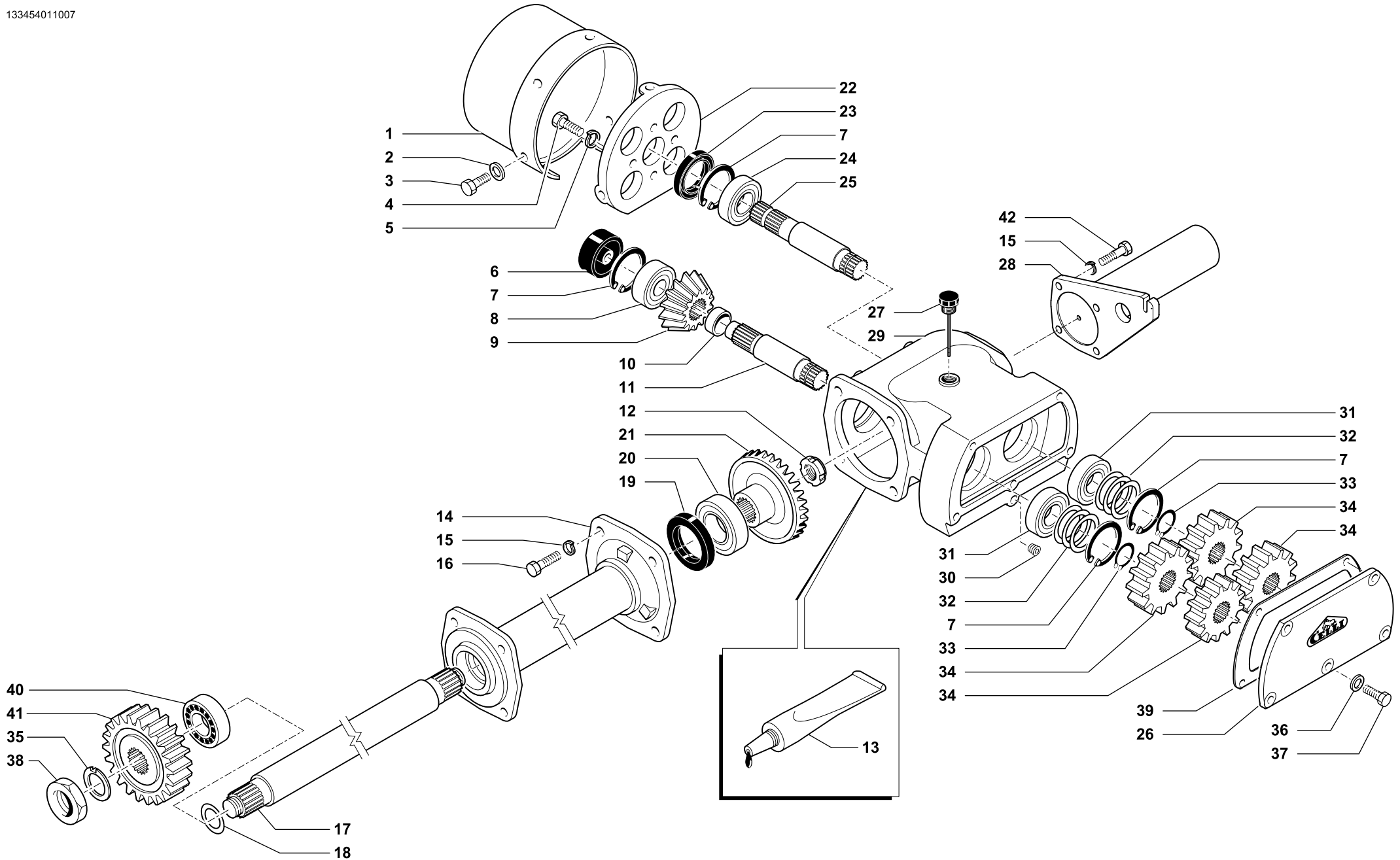
133.453

Rev.

01

1212

RIF.	CODICE	DESCRIZIONE	DENOMINATION	BEZEICHNUNG	DENOMINATION
23	022091	Tappo	Plug	Verschluss	Bouchon
24	323553	Anello	Ring	Ring	Bague
25	331514	Pignone	Pinion	Ritzel	Pignon
26	336910	Supporto scatola L=270	Gearbox support	Halterung	Support boîte de vitesse
90=115	336911	Supporto scatola L=320	Gearbox support	Halterung	Support boîte de vitesse
27	094002	Sigillante	Glue	Klebstoff	Colle
28	333512	Coperchio	Cover	Deckel	Couvercle
29	003041	Cuscinetto	Bearing	Kugellager	Roulement
30	330500	Scatola	Housing	Gehaeuse	Boite
31	332504	Dado	Nut	Mutter	Ecrou
32	003002	Cuscinetto	Bearing	Kugellager	Roulement
33	331516	Ingranaggio	Gear	Zahnrad	Engrenage



SCATOLA TRASMISSIONE 4 VELOCITA' • 4 SPEED GEARBOX  
 GETRIEBEGEHÄUSSE 4 GESCHW. • BOITIER 4 VITESSES

Tav. Tab. Taf.	<b>133.454</b>	Rev. <b>01</b>	<b>1212</b>
----------------------	----------------	----------------	-------------



SCATOLA TRASMISSIONE 4 VELOCITA' • 4 SPEED GEARBOX  
GETRIEBEGEHÄUSE 4 GESCHW. • BOITIER 4 VITESSES

Tav.  
Tab.  
Taf.

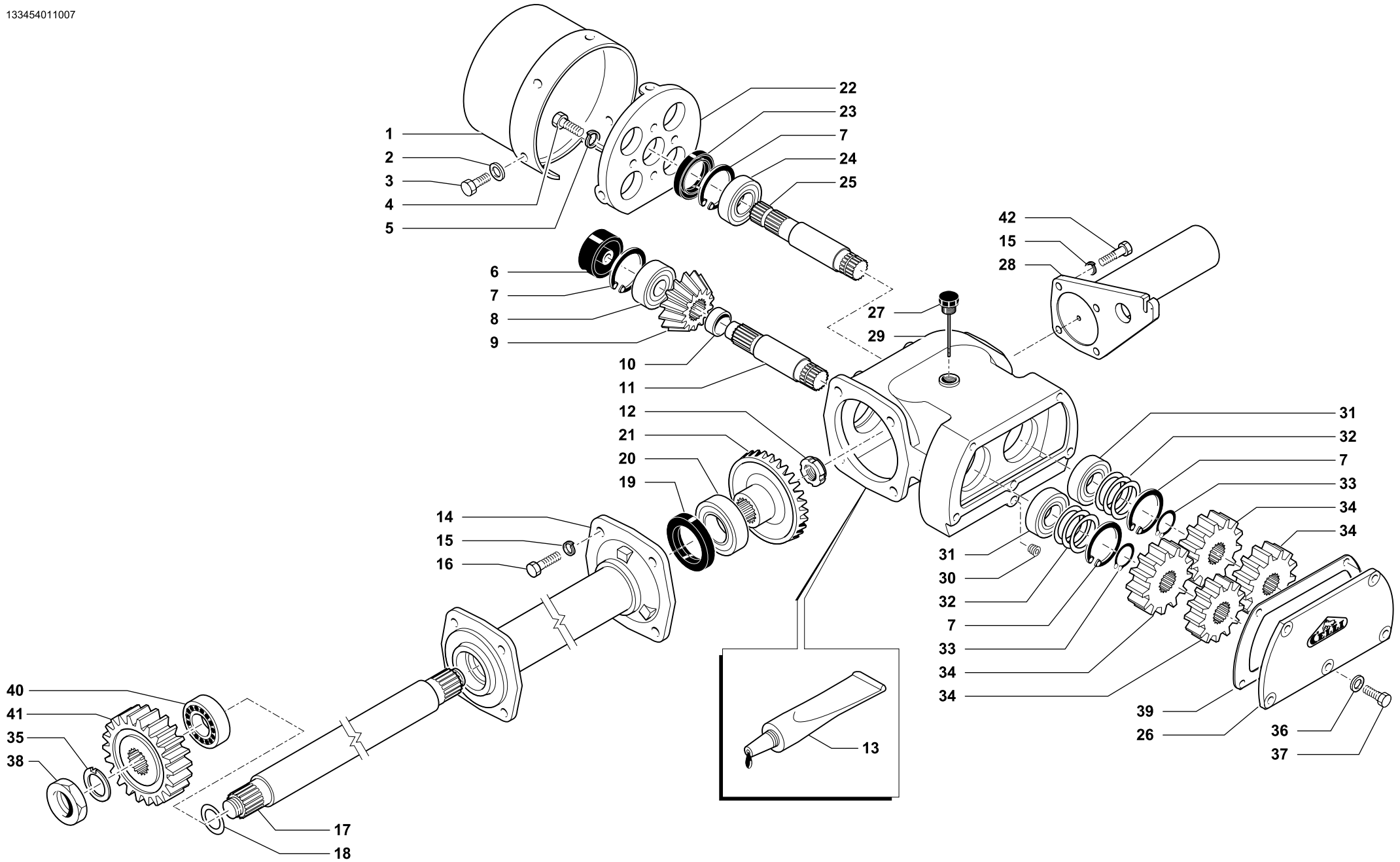
**133.454**

Rev.

**01**

**1212**

RIF.	CODICE	DESCRIZIONE	DENOMINATION	BEZEICHNUNG	DENOMINATION
1	124505	Cuffia	Guard	Schütz	Protection
2	010023	Rondella	Washer	Scheibe	Rondelle
3	014284	Vite	Screw	Schraube	Vis
4	014278	Vite	Screw	Schraube	Vis
5	011002	Grower	Grower	Federscheibe	Grower
6	333512	Coperchio	Cover	Deckel	Couvercle
7	001006	Anello arresto	Stop ring	Sperring	Bague d'arret
8	003041	Cuscinetto	Bearing	Kugellager	Roulement
9	331514	Pignone	Pinion	Ritzel	Pignon
10	323553	Anello	Ring	Ring	Bague
11	332502	Albero	Shaft	Welle	Arbre
12	005007	Ghiera autobloccante	Ring nut	Nutmutter	Collier
13	094002	Sigillante	Glue	Klebstoff	Colle
<b>90</b>	14	336532	Distanziale L=250	Spacer	Entretoise
<b>105+115</b>		336533	Distanziale L=375	Spacer	Entretoise
<b>130</b>		336534	Distanziale L=500	Spacer	Entretoise
<b>155</b>		336535	Distanziale L=625	Spacer	Entretoise
<b>180</b>		336536	Distanziale L=750	Spacer	Entretoise
<b>205</b>		336537	Distanziale L=875	Spacer	Entretoise
	15	011035	Rosetta	Washer	Rondelle
	16	014145	Vite	Screw	Vis
<b>90</b>	17	332532	Semiasse L=340	Achswelle	Demi-axe
<b>105+115</b>		332533	Semiasse L=465	Achswelle	Demi-axe
<b>130</b>		332534	Semiasse L=590	Achswelle	Demi-axe
<b>155</b>		332535	Semiasse L=715	Achswelle	Demi-axe
<b>180</b>		332536	Semiasse L=840	Achswelle	Demi-axe
<b>205</b>		332537	Semiasse L=955	Achswelle	Demi-axe
	18	211507	Spessore	Shim	Beilagescheibe
	19	007042	Paraolio	Oil seal	Simmerring
	20	003145	Cuscinetto	Bearing	Kugellager
	21	331515	Corona	Crownwheel	Zahnkranz
	22	161500	Supporto	Support	Support



SCATOLA TRASMISSIONE 4 VELOCITA' • 4 SPEED GEARBOX  
 GETRIEBEGEHÄUSSE 4 GESCHW. • BOITIER 4 VITESSES

Tav. Tab. Taf.	<b>133.454</b>	Rev.	<b>01</b>	<b>1212</b>
----------------------	----------------	------	-----------	-------------



SCATOLA TRASMISSIONE 4 VELOCITA' • 4 SPEED GEARBOX  
GETRIEBEGEHÄUSSE 4 GESCHW. • BOITIER 4 VITESSES

Tav.  
Tab.  
Taf.

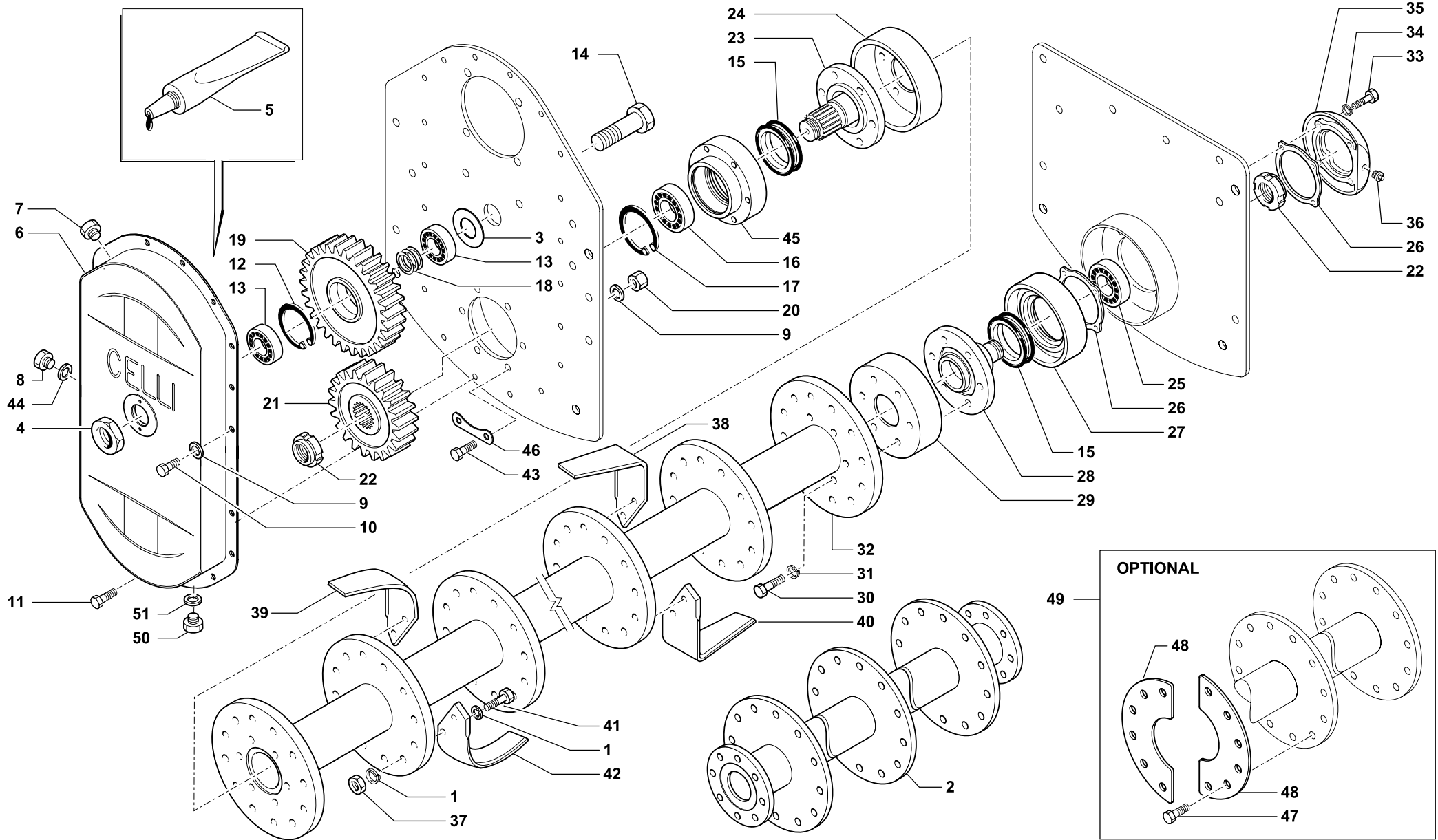
133.454

Rev.

01

1212

RIF.	CODICE	DESCRIZIONE	DENOMINATION	BEZEICHNUNG	DENOMINATION
23	007028	Paraolio	Oil seal	Simmerring	Joint huile
24	003051S	Cuscinetto	Bearing	Kugellager	Roulement
25	332501	Albero	Shaft	Welle	Arbre
26	330502	Coperchio	Cover	Deckel	Couvercle
27	022091	Tappo	Plug	Verschluss	Bouchon
28	336910	Supporto scatola L=270	Gearbox support	Halterung	Support boîte de vitesse
90=115	336911	Supporto scatola L=320	Gearbox support	Halterung	Support boîte de vitesse
29	330501	Scatola	Housing	Gehaeuse	Boîte
30	022009	Tappo	Plug	Verschluss	Bouchon
31	003074	Cuscinetto	Bearing	Kugellager	Roulement
32	001123	Serie spessori	Set spacers	Beilagscheiben	Serie d'epaisseurs
33	001013	Anello arresto	Stop ring	Sperring	Bague d'arret
34	331506	Ingranaggio Z17	Gear	Zahnrad	Engrenage
	331505	Ingranaggio Z16	Gear	Zahnrad	Engrenage
	331507	Ingranaggio Z18	Gear	Zahnrad	Engrenage
	331508	Ingranaggio Z19	Gear	Zahnrad	Engrenage
35	334519	Rondella	Washer	Scheibe	Rondelle
36	011012	Rondella	Washer	Scheibe	Rondelle
37	014205	Vite	Screw	Schraube	Vis
38	332504	Dado	Nut	Mutter	Ecrou
39	333501	Guarnizione	Gasket	Dichtung	Joint
40	003002	Cuscinetto	Bearing	Kugellager	Roulement
41	331516	Ingranaggio	Gear	Zahnrad	Engrenage
42	014106	Vite	Screw	Schraube	Vis





TRANSMISSIONE • TRANSMISSION  
ÜBERTRAGUNG • TRANSMISSION

Tav.  
Tab.  
Taf.

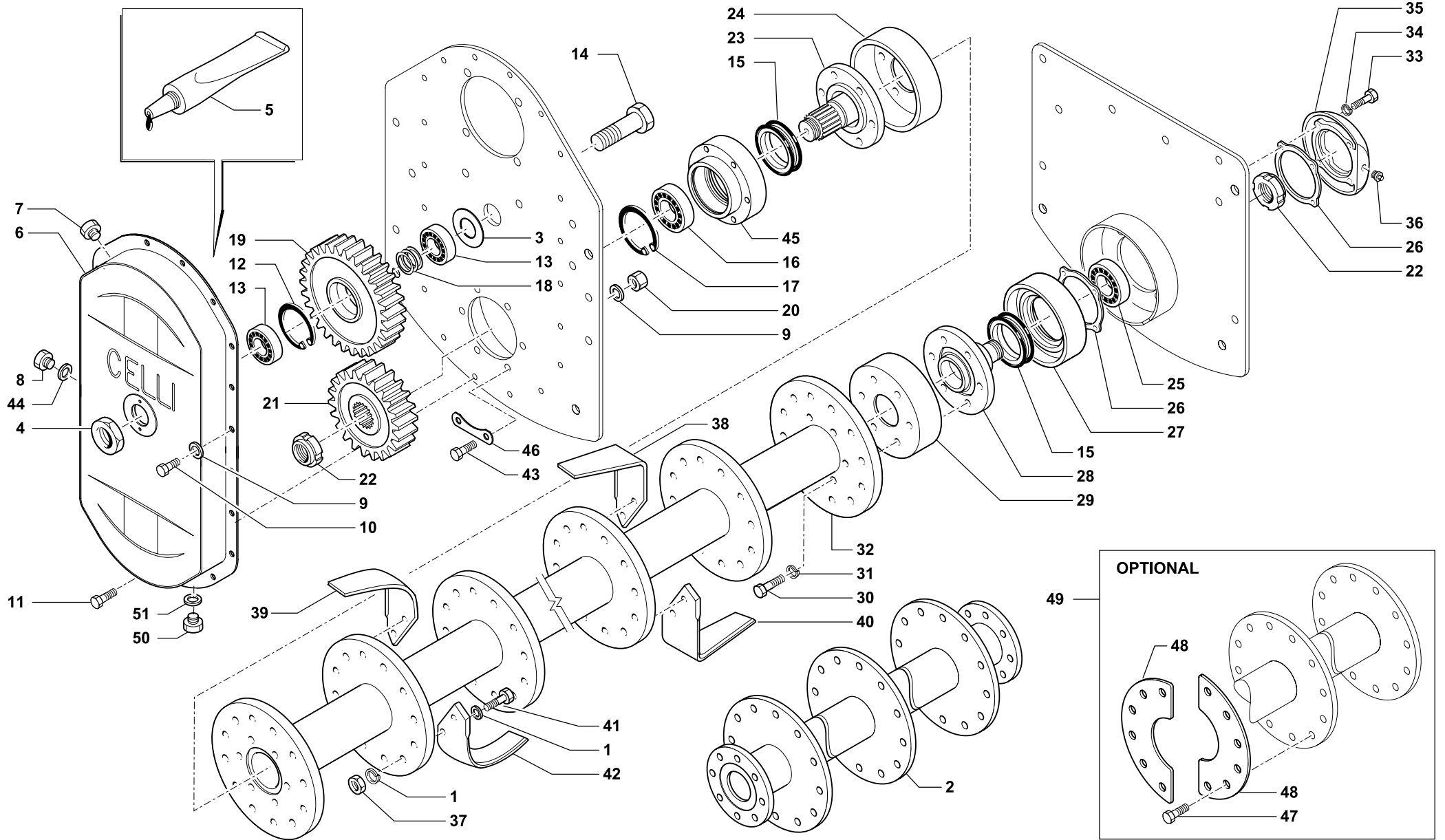
133.455

Rev.

02

1212

RIF.	CODICE	DESCRIZIONE	DENOMINATION	BEZEICHNUNG	DENOMINATION	
	1	011036	Rosetta	Washer	Scheibe	Rondelle
90	2	336569	Rotore F	Rotor F	Rotor F	Rotor F
105		336560	Rotore F	Rotor F	Rotor F	Rotor F
115		336561	Rotore F	Rotor F	Rotor F	Rotor F
130		336562	Rotore F	Rotor F	Rotor F	Rotor F
155		336564	Rotore F	Rotor F	Rotor F	Rotor F
180		336566	Rotore F	Rotor F	Rotor F	Rotor F
205		336568	Rotore F	Rotor F	Rotor F	Rotor F
	3	334505	Rondella di rinforzo	Washer	Scheibe	Rondelle
	4	332504	Dado	Nut	Mutter	Ecrou
	5	094002	Sigillante	Glue	Klebstoff	Colle
	6	336500	Coperchio carter	Cover	Deckel	Couvercle
	7	022010	Tappo 1/2 con sfiato	Plug	Verschluss	Bouchon
	8	022150	Tappo 1/2	Plug	Verschluss	Bouchon
	9	010023	Rondella	Washer	Scheibe	Rondelle
	10	014284	Vite	Screw	Schraube	Vis
	11	014005	Vite	Screw	Schraube	Vis
	12	001006	Anello arresto	Stop ring	Sperring	Bague d'arret
	13	003074	Cuscinetto	Bearing	Kugellager	Roulement
	14	332505	Perno	Pivot	Zapfen	Axe
	15	271509	Gruppo tenuta	Seal group	Abdichtungsgruppe	Ensemble roulements
	16	003161	Cuscinetto	Bearing	Kugellager	Roulement
	17	001003	Anello arresto	Stop ring	Sperring	Bague d'arret
	18	311511	Spessore	Spacer	Distanzstueck	Entretoise
		311525	Spessore	Spacer	Distanzstueck	Entretoise
		311528	Spessore	Spacer	Distanzstueck	Entretoise
	19	331517	Ingranaggio	Gear	Zahnrad	Engrenage
	20	004055	Dado	Nut	Mutter	Ecrou
	21	331518	Ingranaggio	Gear	Zahnrad	Engrenage
	22	005008	Ghiera	Ring nut	Nutmutter	Collier
	23	331519	Fusello	Drive hub	Achszapfen	Fusee
	24	334502	Parapolvere	Dust cover	Staubdeckel	Cache anti poussière





TRANSMISSIONE • TRANSMISSION  
ÜBERTRAGUNG • TRANSMISSION

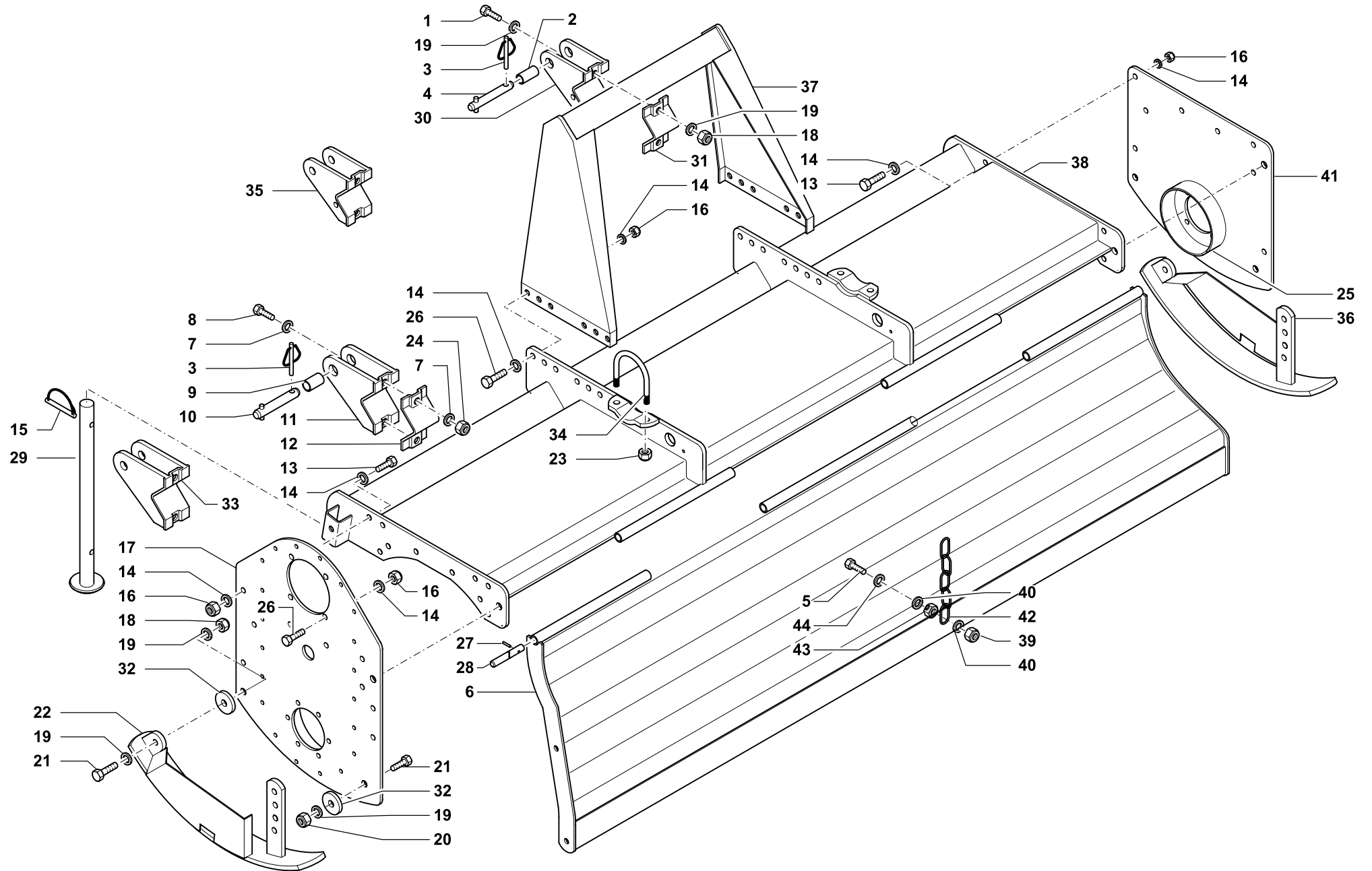
Tav.  
Tab.  
Taf.

133.455

Rev. 02

1212

RIF.	CODICE	DESCRIZIONE	DENOMINATION	BEZEICHNUNG	DENOMINATION	
	25	003011	Cuscinetto	Bearing	Kugellager	Roulement
	26	333503	Guarnizione	Gasket	Dichtring	Guarniture
	27	331525	Supporto	Support	Halterung	Support
	28	331520	Fusello	Drive hub	Achszapfen	Fusee
	29	334502	Parapolvere	Dust cover	Staubdeckel	Cache anti poussière
	30	014213	Vite	Screw	Schraube	Vis
	31	011035	Grower	Grower	Federscheibe	Grower
<b>90</b>	32	336559	Rotore D	Rotor D	Rotor D	Rotor D
<b>105</b>		336550	Rotore D	Rotor D	Rotor D	Rotor D
<b>115</b>		336551	Rotore D	Rotor D	Rotor D	Rotor D
<b>130</b>		336552	Rotore D	Rotor D	Rotor D	Rotor D
<b>155</b>		336554	Rotore D	Rotor D	Rotor D	Rotor D
<b>180</b>		336556	Rotore D	Rotor D	Rotor D	Rotor D
<b>205</b>		336558	Rotore D	Rotor D	Rotor D	Rotor D
	33	014256	Vite	Screw	Schraube	Vis
	34	011002	Grower	Grower	Federscheibe	Grower
	35	330503	Coperchio	Cover	Deckel	Couvercle
	36	022009	Tappo	Plug	Verschluss	Bouchon
	37	004004	Dado	Nut	Mutter	Ecrou
	38	331527	Zappa sinistra a squadro	Blade	Messer	Lame
	39	331529	Zappa sinistra curva	Blade	Messer	Lame
	40	331526	Zappa destra a squadro	Blade	Messer	Lame
	41	014004	Vite	Screw	Schraube	Vis
	42	331528	Zappa destra curva	Blade	Messer	Lame
	43	014205	Vite	Screw	Schraube	Vis
	44	022087	Rondella	Washer	Scheibe	Rondelle
	45	331524	Supporto albero comando rotore	Support	Halterung	Support
	46	411511	Rosetta di sicurezza	Washer	Scheibe	Rondelle
	47	014019	Vite	Screw	Schraube	Vis
	48	334060	Controflangia	Flange	Flansch	Flasque
	49	371818	Kit controflange	Flange kit	Flansch	Flasque
	50	022009	Tappo 1/4 gas	Plug	Verschluss	Bouchon
	51	011007	Grower	Grower	Federscheibe	Grower



TELAIO • FRAME  
RAHMEN • CHASSIS



TELAIO • FRAME  
RAHMEN • CHASSIS

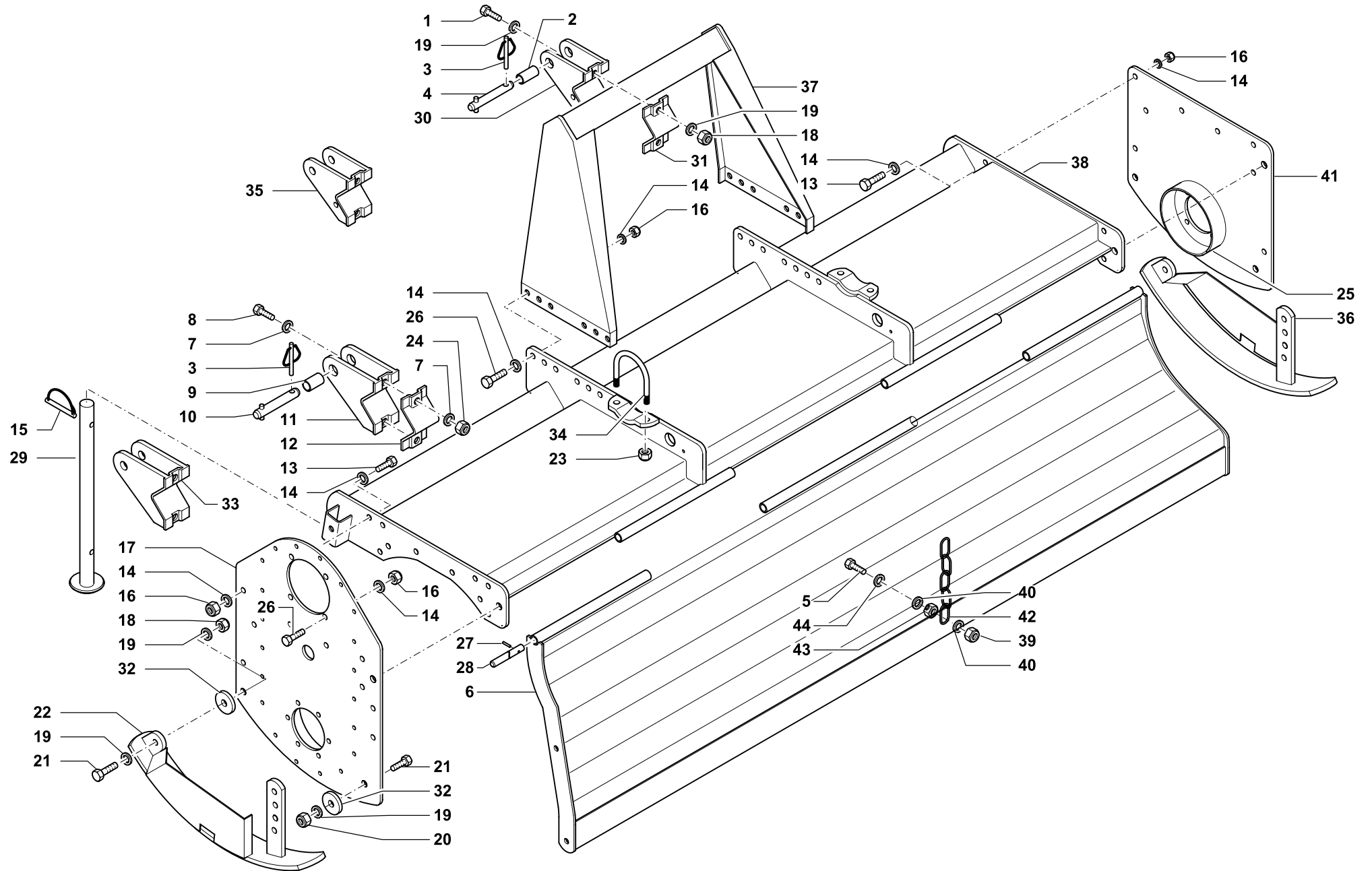
Tav.  
Tab.  
Taf.

133.357

Rev. 02

1212

RIF.	CODICE	DESCRIZIONE	DENOMINATION	BEZEICHNUNG	DENOMINATION	
	1	014126	Vite	Screw	Schraube	Vis
	2	099039	Bussola	Bush	Buchse	Bague
	3	013011	Spina	Pin	Stift	Goupille
	4	523610	Perno superiore Ø 19	Pin	Zapfen	Pivot
	5	014291	Vite	Screw	Schraube	Vis
90	6	336460	Scudo mobile	Rear shield	Bodenklappe	Tablier arriere
105		336461	Scudo mobile	Rear shield	Bodenklappe	Tablier arriere
115		336462	Scudo mobile	Rear shield	Bodenklappe	Tablier arriere
130		336463	Scudo mobile	Rear shield	Bodenklappe	Tablier arriere
155		336465	Scudo mobile	Rear shield	Bodenklappe	Tablier arriere
180		336467	Scudo mobile	Rear shield	Bodenklappe	Tablier arriere
205		336469	Scudo mobile	Rear shield	Bodenklappe	Tablier arriere
	7	010006	Rondella	Washer	Scheibe	Rondelle
	8	014221	Vite	Screw	Schraube	Vis
	9	099040	Bussola	Bush	Buchse	Bague
	10	523611	Perno inferiore Ø 22	Pin	Zapfen	Pivot
	11	336504	Attacco inferiore Ø 22	Lower linkage	Oberer unterer	Attelage inferieur
	12	334514	Morsetto inferiore	Clamp	Klemme	Etau
	13	014145	Vite	Screw	Schraube	Vis
	14	010005	Rondella	Washer	Scheibe	Rondelle
	15	013048	Spina	Pin	Holstift	Axe
	16	004079	Dado	Nut	Mutter	Ecrou
	17	336717	Laterale sinistro	L.H. side shield	L.H. seitlicher schild	Joue gauche
	18	004054	Dado	Nut	Mutter	Ecrou
	19	010002	Rondella	Washer	Scheibe	Rondelle
	20	004054	Dado	Nut	Mutter	Ecrou
	21	014082	Vite	Screw	Schraube	Vis
	22	336740	Pattino sinistro	L.H. skid	Linke kufe	Patin gauche
	23	004079	Dado	Nut	Mutter	Ecrou
	24	004072	Dado	Nut	Mutter	Ecrou
	25	342506	Anello (da saldare)	Ring (to be welded)	Ring (zum schweissen)	Bague (à souder)
	26	014213	Vite	Screw	Schraube	Vis



TELAIO • FRAME  
 RAHMEN • CHASSIS



TELAIO • FRAME  
RAHMEN • CHASSIS

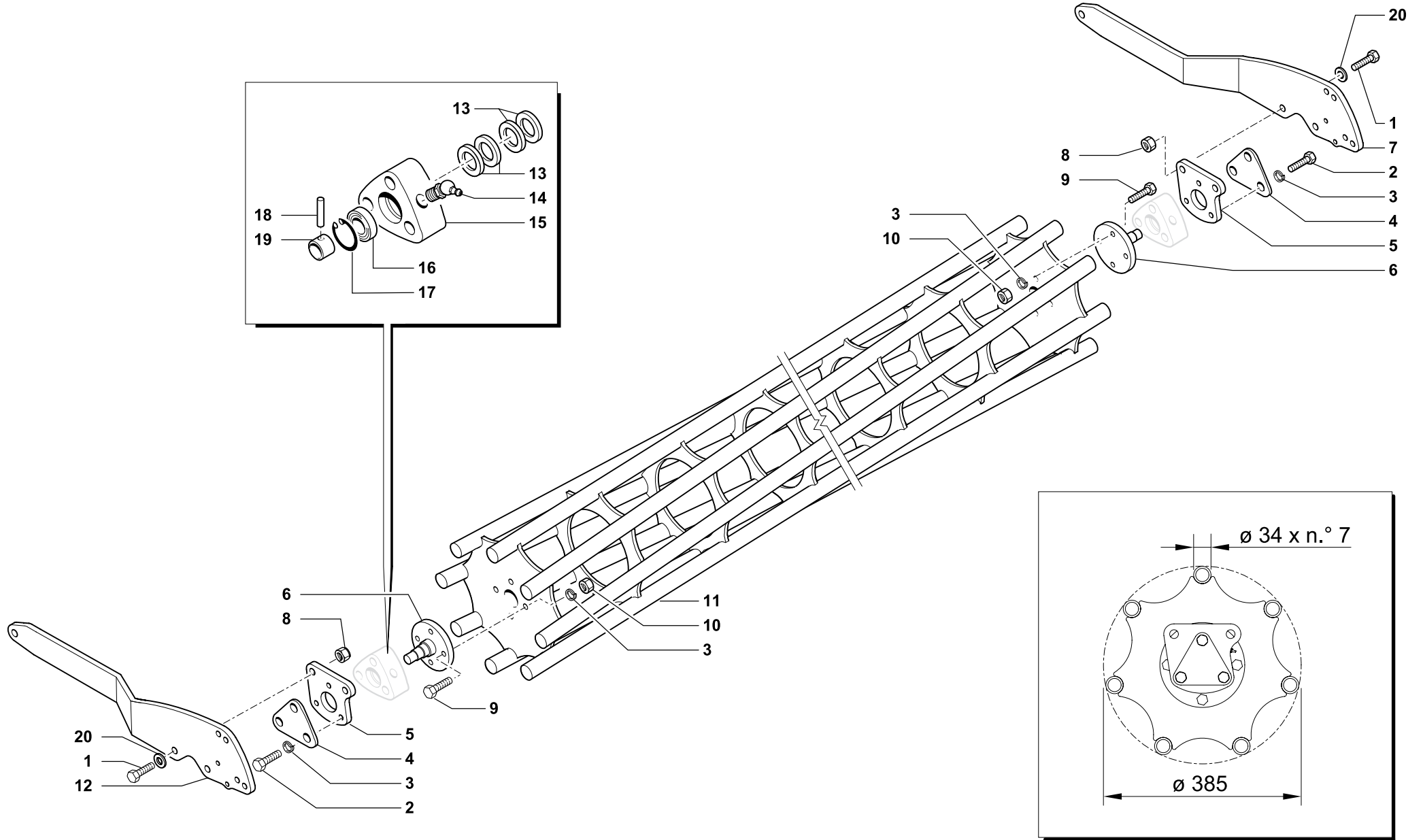
Tav.  
Tab.  
Taf.

133.357

Rev. 02

1212

RIF.	CODICE	DESCRIZIONE	DENOMINATION	BEZEICHNUNG	DENOMINATION	
	27	013003	Spina	Pin	Stift	Goupille
90	28	332400	Perno	Pin	Zapfen	Pivot
105		332401	Perno	Pin	Zapfen	Pivot
115		332402	Perno	Pin	Zapfen	Pivot
130		332403	Perno	Pin	Zapfen	Pivot
155		332405	Perno	Pin	Zapfen	Pivot
180		332407	Perno	Pin	Zapfen	Pivot
205		332409	Perno	Pin	Zapfen	Pivot
	29	961596	Piede	Stand	Stelfuss	Pied
	30	336505	Attacco superiore Ø 19	Top linkage	Oberer onschluss	Attelage superieur
	31	334515	Morsetto superiore	Clamp	Klemme	Etau
	32	334001	Rondella	Washer	Scheibe	Rondelle
	33	336514	Attacco inferiore allungato	Lower linkage	Oberer unterer	Attelage inferieur
	34	332510	Cavallotto	U bolt	Bügelbolzen	Crampillon
	35	336515	Attacco superiore allungato	Top linkage	Oberer onschluss	Attelage superieur
	36	336741	Pattino destro	R.H skid	Rechte kufe	Patin droite
	37	336503	Castello 3 punti	Third point	Hebe boch	Bati 3 point
90	38	336850	Telaio	Frame	Rahmen	Chassis
105		336851	Telaio	Frame	Rahmen	Chassis
115		336852	Telaio	Frame	Rahmen	Chassis
130		336853	Telaio	Frame	Rahmen	Chassis
155		336855	Telaio	Frame	Rahmen	Chassis
180		336857	Telaio	Frame	Rahmen	Chassis
205		336859	Telaio	Frame	Rahmen	Chassis
	39	004084	Dado	Nut	Mutter	Ecrou
	40	010004	Rondella	Washer	Scheibe	Rondelle
	41	336718	Laterale destro	R.H. side shield	L.H. seitlicher schild	Joue droite
	42	009021	Catena	Chain	Kette	Chaîne
	43	004058	Dado	Nut	Mutter	Ecrou
	44	010021	Rondella	Washer	Scheibe	Rondelle



RULLO GABBIA Ø 385 • CAGE ROLLER Ø 385  
 KÄFIGWALZE Ø 385 • ROULEAU CAGE Ø 385

Tav. Tab. Taf.	<b>133.196</b>	Rev.	<b>01</b>	<b>1212</b>
----------------------	----------------	------	-----------	-------------



RULLO GABBIA Ø 385 • CAGE ROLLER Ø 385  
KÄFIGWALZE Ø 385 • ROULEAU CAGE Ø 385

Tav.  
Tab.  
Taf.

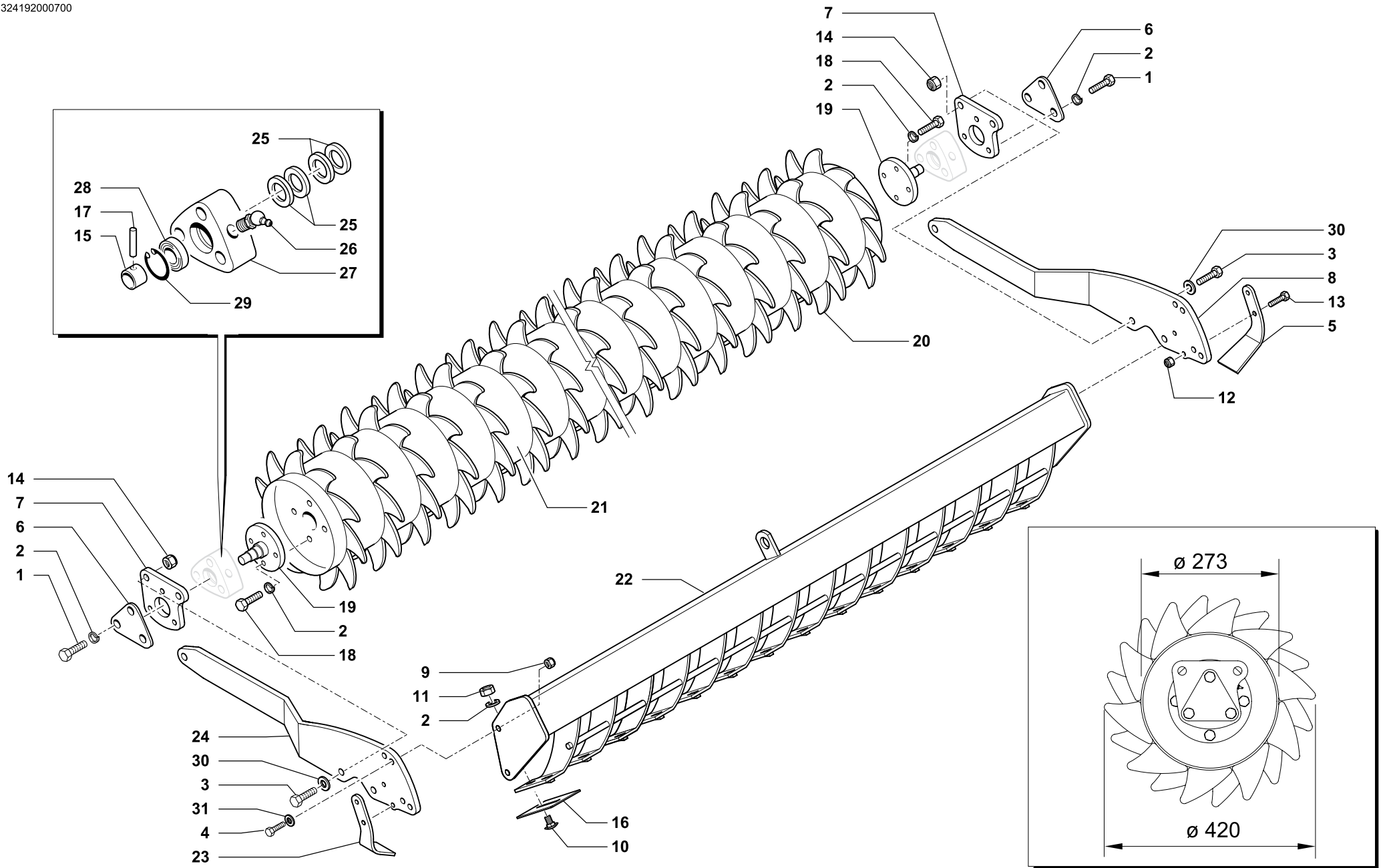
133.196

Rev.

01

1212

RIF.	CODICE	DESCRIZIONE	DENOMINATION	BEZEICHNUNG	DENOMINATION	
	1	014192	Vite	Screw	Schraube	Vis
	2	014145	Vite	Screw	Schraube	Vis
	3	011003	Grower	Grower	Federscheibe	Grower
	4	612372	Chiusura	Plate	Plate	Platte
	5	661402	Piastra	Plate	Plate	Platte
	6	661401	Fusello	Stub axle	Flansch	Fusee
	7	344531	Braccio DX	Arm	Arm	Bras
	8	004072	Dado	Nut	Mutter	Ecrou
	9	014254	Vite	Screw	Schraube	Vis
	10	004030	Dado	Nut	Mutter	Ecrou
130	11	961970	Rullo gabbia	Cage roller	Käfigwalze	Rouleau cage
155		961971	Rullo gabbia	Cage roller	Käfigwalze	Rouleau cage
180		961972	Rullo gabbia	Cage roller	Käfigwalze	Rouleau cage
205		961973	Rullo gabbia	Cage roller	Käfigwalze	Rouleau cage
	12	344530	Braccio SX	Arm	Arm	Bras
	13	099018	Gruppo parapolvere	Dust cover	Staubdeckel	Cache anti poussière
	14	008005	Ingrassatore	Grease nipple	Fettbuechse	Graisser
	15	421604	Supporto	Support	Halterung	Support
	16	003051	Cuscinetto	Bearing	Kugellager	Roulement
	17	001006	Anello di arresto	Stop ring	Sperring	Bague d'arret
	18	013019	Spina	Pin	Stift	Goupille
	19	661403	Bussola	Bush	Buchse	Bague
	20	010006	Rondella	Washer	Scheibe	Rondelle
130		<b>998400</b>	Rullo gabbia + Supporti	Cage roller + Support	Stabwalze + Halterung	Rouleau cage + Support
155		<b>998401</b>	Rullo gabbia + Supporti	Cage roller + Support	Stabwalze + Halterung	Rouleau cage + Support
180		<b>998402</b>	Rullo gabbia + Supporti	Cage roller + Support	Stabwalze + Halterung	Rouleau cage + Support
205		<b>998403</b>	Rullo gabbia + Supporti	Cage roller + Support	Stabwalze + Halterung	Rouleau cage + Support
130		<b>338652</b>	Kit rullo gabbia completo	Kit cage roller complete	Stabwalze komplett	Kit rouleau cage complet
155		<b>335654</b>	Kit rullo gabbia completo	Kit cage roller complete	Stabwalze komplett	Kit rouleau cage complet
180		<b>338656</b>	Kit rullo gabbia completo	Kit cage roller complete	Stabwalze komplett	Kit rouleau cage complet
205		<b>338658</b>	Kit rullo gabbia completo	Kit cage roller complete	Stabwalze komplett	Kit rouleau cage complet



RULLO PACKER Ø 420 • PACKER ROLLER Ø 420  
 PACKERWALZE Ø 420 • ROULEAU PACKER Ø 420

Tav. Tab. Taf.	<b>133.198</b>	Rev.	<b>01</b>	<b>1212</b>
----------------------	----------------	------	-----------	-------------



RULLO PACKER Ø 420 • PACKER ROLLER Ø 420  
PACKERWALZE Ø 420 • ROULEAU PACKER Ø 420

Tav.  
Tab.  
Taf.

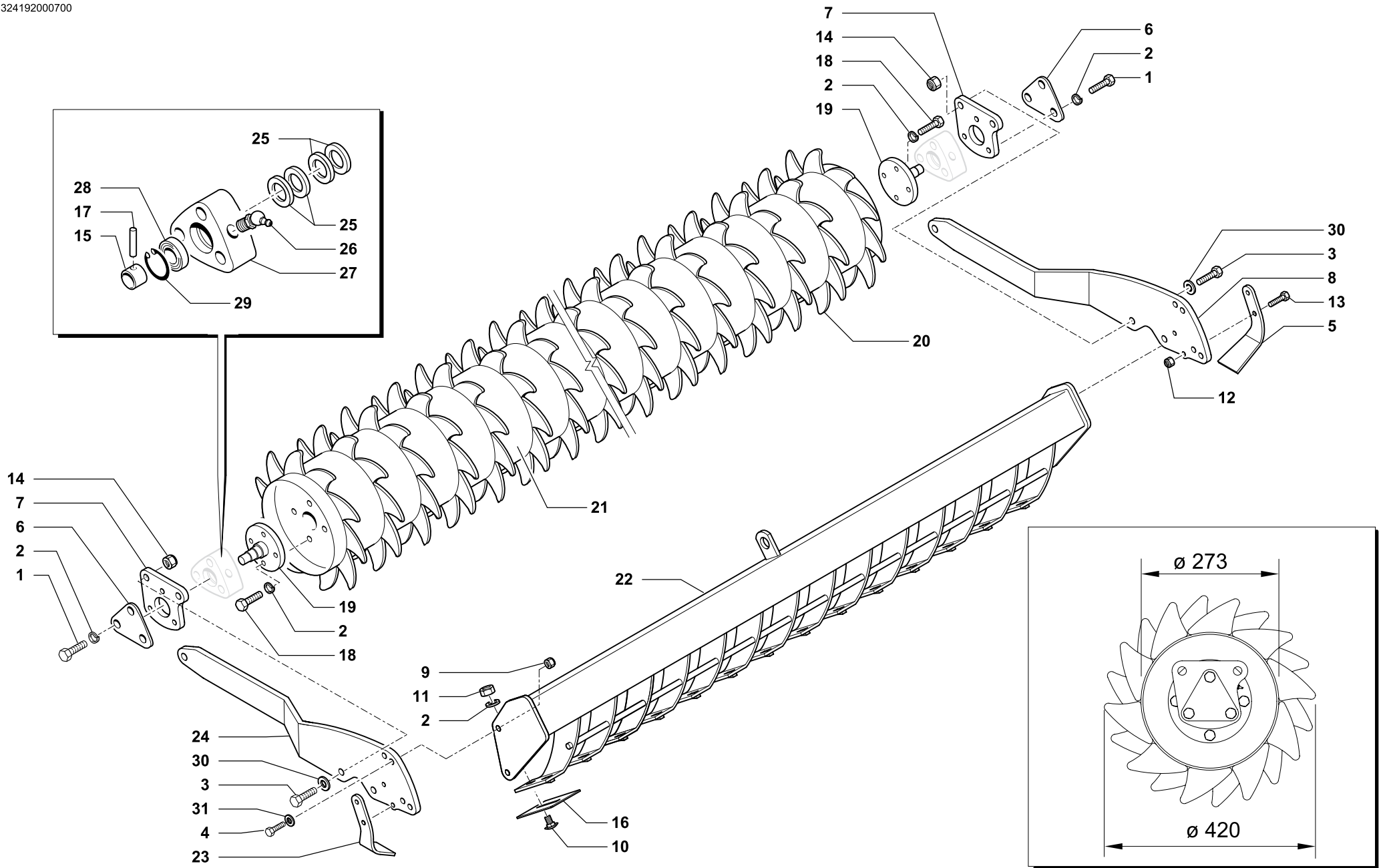
133.198

Rev.

01

1212

RIF.	CODICE	DESCRIZIONE	DENOMINATION	BEZEICHNUNG	DENOMINATION
1	014145	Vite	Screw	Schraube	Vis
2	011003	Grower	Grower	Federscheibe	Grower
3	014192	Vite	Screw	Schraube	Vis
4	014082	Vite	Screw	Schraube	Vis
5	911626	Raschietto laterale DX	Scraper	Schaber	Racloir
6	612372	Chiusura	Plate	Plate	Platte
7	661402	Piastra	Plate	Plate	Platte
8	344531	Braccio DX	Arm	Arm	Bras
9	004054	Dado	Nut	Mutter	Ecrou
10	014386	Vite	Screw	Schraube	Vis
11	004003	Dado	Nut	Mutter	Ecrou
12	004084	Dado	Nut	Mutter	Ecrou
13	014256	Vite	Screw	Schraube	Vis
14	004072	Dado	Nut	Mutter	Ecrou
15	661403	Bussola	Bush	Buchse	Bague
16	911601	Raschietto	Scraper	Schaber	Racloir
17	013019	Spina	Pin	Stift	Goupille
18	014145	Vite	Screw	Schraube	Vis
19	661401	Fusello	Stub axle	Flansch	Fusee
20	412782	Dente (da saldare)	Tine (to be welded)	Zahn (zum schweissen)	Dent (à souder)
130	21	961940	Rullo packer	Packer roller	Rouleau packer
155		961941	Rullo packer	Packer roller	Rouleau packer
180		961942	Rullo packer	Packer roller	Rouleau packer
205		961943	Rullo packer	Packer roller	Rouleau packer
130	22	961141	Barra porta raschietti	Scratcher support	Porte-racloir
155		961143	Barra porta raschietti	Scratcher support	Porte-racloir
180		961910	Barra porta raschietti	Scratcher support	Porte-racloir
205		961911	Barra porta raschietti	Scratcher support	Porte-racloir
	23	911625	Raschietto laterale SX	Scraper	Racloir
	24	344530	Braccio SX	Arm	Bras
	25	099018	Gruppo parapolvere	Dust cover	Cache anti poussière
	26	008005	Ingrassatore	Grease nipple	Graisser



RULLO PACKER Ø 420 • PACKER ROLLER Ø 420  
 PACKERWALZE Ø 420 • ROULEAU PACKER Ø 420

Tav. Tab. Taf.	<b>133.198</b>	Rev.	<b>01</b>	<b>1212</b>
----------------------	----------------	------	-----------	-------------



**RULLO PACKER Ø 420 • PACKER ROLLER Ø 420**  
**PACKERWALZE Ø 420 • ROULEAU PACKER Ø 420**

Tav.  
Tab.  
Taf.

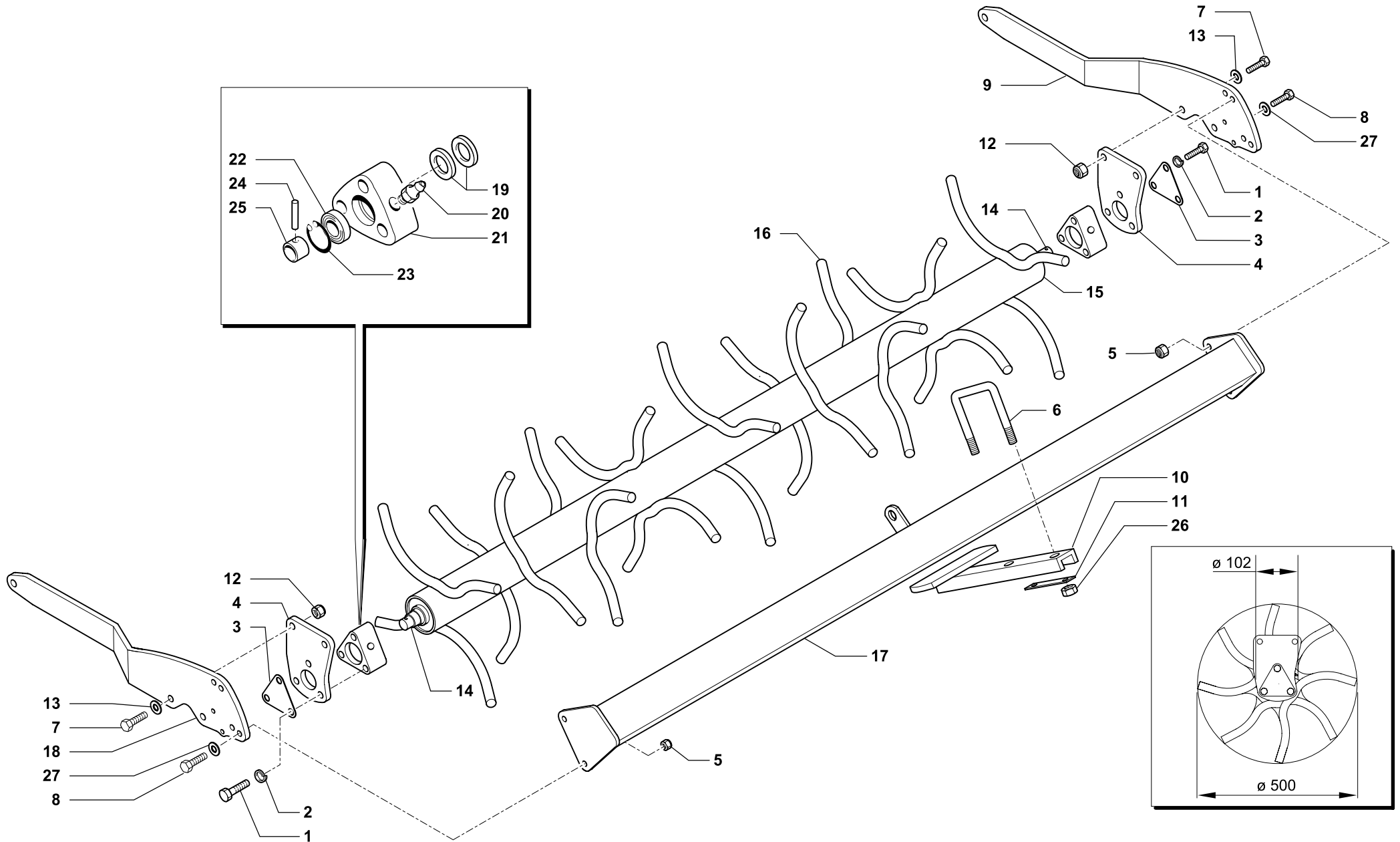
**133.198**

Rev.

**01**

**1212**

RIF.	CODICE	DESCRIZIONE	DENOMINATION	BEZEICHNUNG	DENOMINATION
27	421604	Supporto	Support	Halterung	Support
28	003051	Cuscinetto	Bearing	Kugellager	Roulement
29	001006	Anello di arresto	Stop ring	Sperring	Bague d'arret
30	010006	Rondella	Washer	Scheibe	Rondelle
31	010002	Rondella	Washer	Scheibe	Rondelle
<b>130</b>	<b>998290</b>	Rullo packer + Supporti	Packer roller + Support	Packerwalze + Halterung	Rouleau packer + Support
<b>155</b>	<b>998291</b>	Rullo packer + Supporti	Packer roller + Support	Packerwalze + Halterung	Rouleau packer + Support
<b>180</b>	<b>998292</b>	Rullo packer + Supporti	Packer roller + Support	Packerwalze + Halterung	Rouleau packer + Support
<b>205</b>	<b>998293</b>	Rullo packer + Supporti	Packer roller + Support	Packerwalze + Halterung	Rouleau packer + Support
<b>130</b>	<b>338672</b>	Kit rullo packer completo	Kit packer roller complete	Packerwalze komplett	Kit rouleau packer complet
<b>155</b>	<b>338674</b>	Kit rullo packer completo	Kit packer roller complete	Packerwalze komplett	Kit rouleau packer complet
<b>180</b>	<b>338676</b>	Kit rullo packer completo	Kit packer roller complete	Packerwalze komplett	Kit rouleau packer complet
<b>205</b>	<b>338678</b>	Kit rullo packer completo	Kit packer roller complete	Packerwalze komplett	Kit rouleau packer complet



RULLO SPUNTONI Ø 500 • SPIKES ROLLER Ø 500  
 STACHELWALZE Ø 500 • ROULEAU POINTES Ø 500

Tav. Tab. Taf.	<b>133.195</b>	Rev.	<b>02</b>	<b>1212</b>
----------------------	----------------	------	-----------	-------------



RULLO SPUNTONI Ø 500 • SPIKES ROLLER Ø 500  
STACHELWALZE Ø 500 • ROULEAU POINTES Ø 500

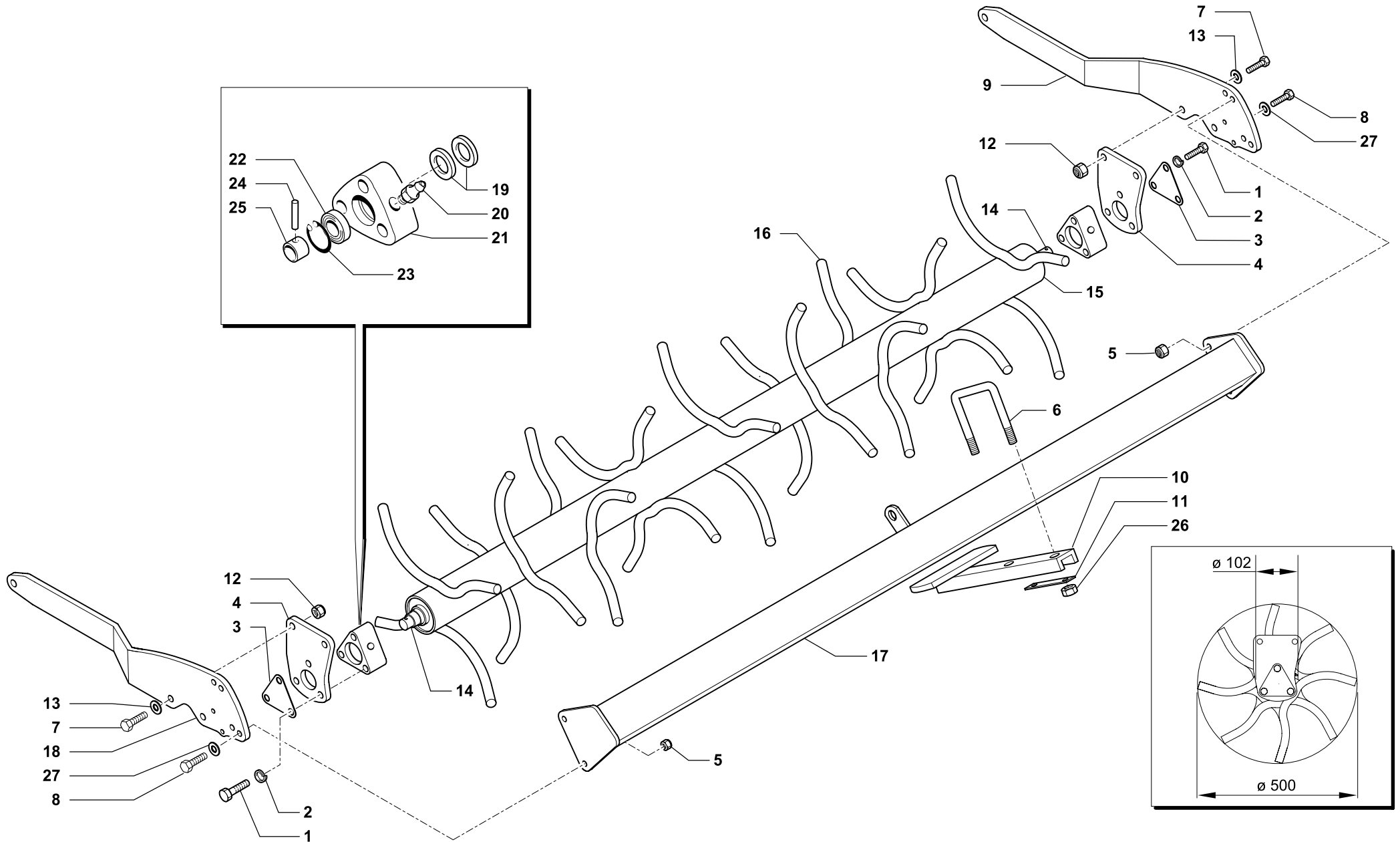
Tav.  
Tab.  
Taf.

133.195

Rev. 02

1212

RIF.	CODICE	DESCRIZIONE	DENOMINATION	BEZEICHNUNG	DENOMINATION	
1	014145	Vite	Screw	Schraube	Vis	
2	011003	Grower	Grower	Federscheibe	Grower	
3	612372	Chiusura	Plate	Plate	Platte	
4	661406	Piastra rullo spuntoni	Plate	Plate	Platte	
5	004054	Dado	Nut	Mutter	Ecrou	
6	623750	Cavallotto	U bolt	Bügelbolzen	Crampillon	
7	014192	Vite	Screw	Schraube	Vis	
8	014082	Vite	Screw	Schraube	Vis	
9	344531	Braccio DX	Arm	Arm	Bras	
10	961818	Raschietto	Scraper	Schaber	Racloir	
11	911602	Piatto	Plate	Platte	Plate	
12	004072	Dado	Nut	Mutter	Ecrou	
13	010006	Rondella	Washer	Unterlegscheibe	Rondelle	
14	612351	Fusello (da saldare)	Stub axle (to be welded)	Flansch (zum schweissen)	Fusee (à souder)	
130	15	961130	Rullo spuntoni	Spikes roller	Stachelwalze	Rouleau pointes
155		961131	Rullo spuntoni	Spikes roller	Stachelwalze	Rouleau pointes
180		961132	Rullo spuntoni	Spikes roller	Stachelwalze	Rouleau pointes
205		961133	Rullo spuntoni	Spikes roller	Stachelwalze	Rouleau pointes
	16	913706	Spuntone doppio (da saldare)	Spike (to be welded)	Zinken (zum schweissen)	Esponton (à souder)
130	17	961881	Barra porta raschietti	Scratcher support	Schaberhalter	Porte-racloir
155		961883	Barra porta raschietti	Scratcher support	Schaberhalter	Porte-racloir
180		961850	Barra porta raschietti	Scratcher support	Schaberhalter	Porte-racloir
205		961851	Barra porta raschietti	Scratcher support	Schaberhalter	Porte-racloir
	18	344530	Braccio SX	Arm	Arm	Bras
	19	099018	Gruppo parapolvere	Dust cover	Staubdeckel	Cache anti poussière
	20	008005	Ingrassatore	Grease nipple	Fettbuechse	Graisser
	21	421604	Supporto	Support	Halterung	Support
	22	003051	Cuscinetto	Bearing	Kugellager	Roulement
	23	001006	Anello di arresto	Stop ring	Sperring	Bague d'arret
	24	013019	Spina	Pin	Stift	Goupille
	25	661403	Bussola	Bush	Buchse	Bague
	26	004101	Dado	Nut	Mutter	Ecrou



RULLO SPUNTONI Ø 500 • SPIKES ROLLER Ø 500  
 STACHELWALZE Ø 500 • ROULEAU POINTES Ø 500

Tav. Tab. Taf.	<b>133.195</b>	Rev.	<b>02</b>	<b>1212</b>
----------------------	----------------	------	-----------	-------------



**RULLO SPUNTONI Ø 500 • SPIKES ROLLER Ø 500**  
**STACHELWALZE Ø 500 • ROULEAU POINTES Ø 500**

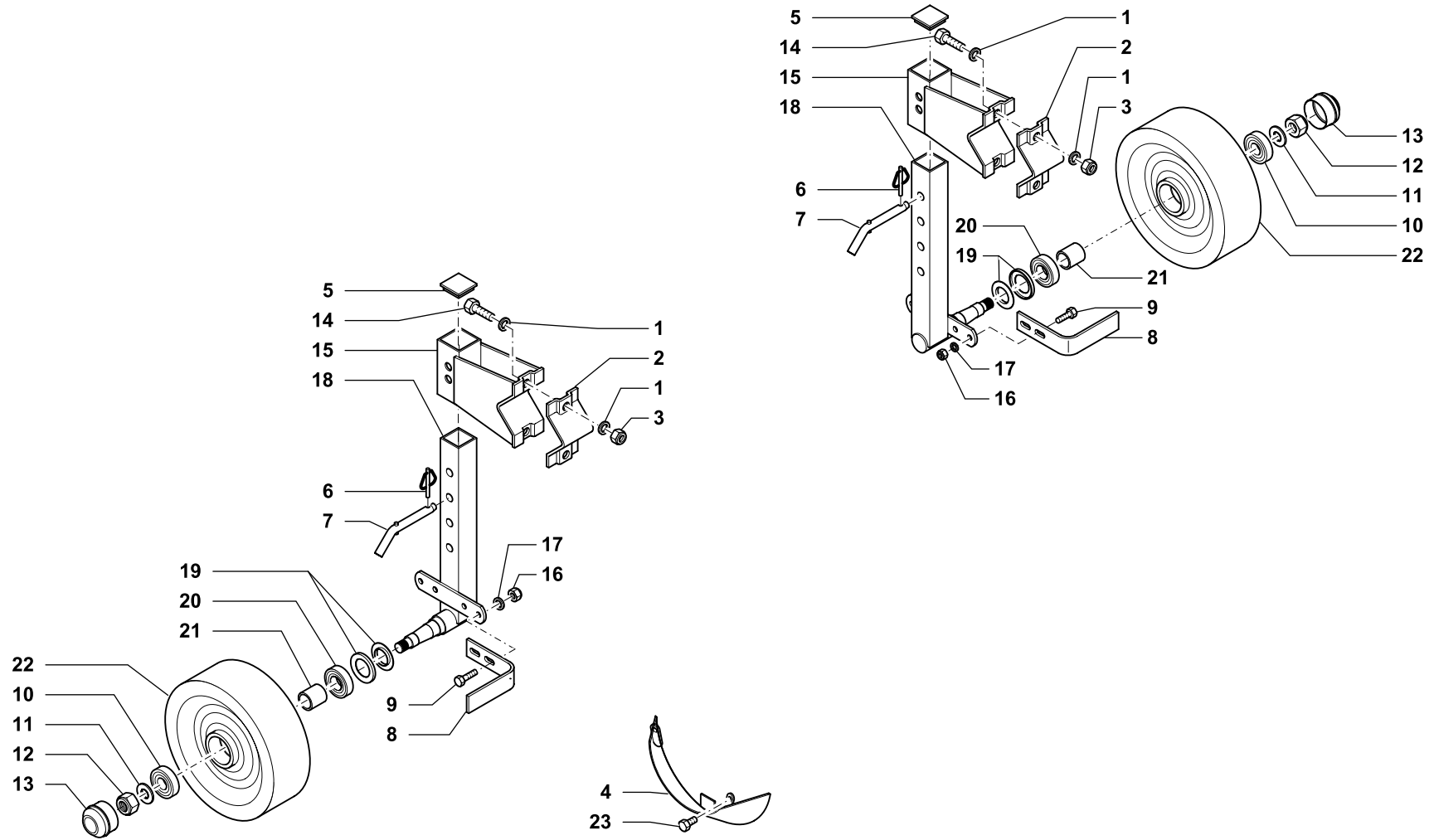
Tav.  
Tab.  
Taf.

**133.195**

Rev. **02**

**1212**

RIF.	CODICE	DESCRIZIONE	DENOMINATION	BEZEICHNUNG	DENOMINATION
27	010002	Rondella	Washer	Unterlegscheibe	Rondelle
130	<b>998300</b>	Rullo spuntoni + Supporti	Spikes roller + Support	Stachelwalze + Halterung	Rouleau pointes + Support
155	<b>998301</b>	Rullo spuntoni + Supporti	Spikes roller + Support	Stachelwalze + Halterung	Rouleau pointes + Support
180	<b>998302</b>	Rullo spuntoni + Supporti	Spikes roller + Support	Stachelwalze + Halterung	Rouleau pointes + Support
205	<b>998303</b>	Rullo spuntoni + Supporti	Spikes roller + Support	Stachelwalze + Halterung	Rouleau pointes + Support
130	<b>338662</b>	Kit rullo spuntoni completo	Kit spikes roller complete	Stachelwalze komplett	Kit rouleau pointes complet
155	<b>338664</b>	Kit rullo spuntoni completo	Kit spikes roller complete	Stachelwalze komplett	Kit rouleau pointes complet
180	<b>338666</b>	Kit rullo spuntoni completo	Kit spikes roller complete	Stachelwalze komplett	Kit rouleau pointes complet
205	<b>338668</b>	Kit rullo spuntoni completo	Kit spikes roller complete	Stachelwalze komplett	Kit rouleau pointes complet



**RUOTE ANTERIORI • FRONT WHEELS**  
**VORDERE RÄDE • ROUES AVANT**



RUOTE ANTERIORI • FRONT WHEELS  
VORDERE RÄDE • ROUES AVANT

Tav.  
Tab.  
Taf.

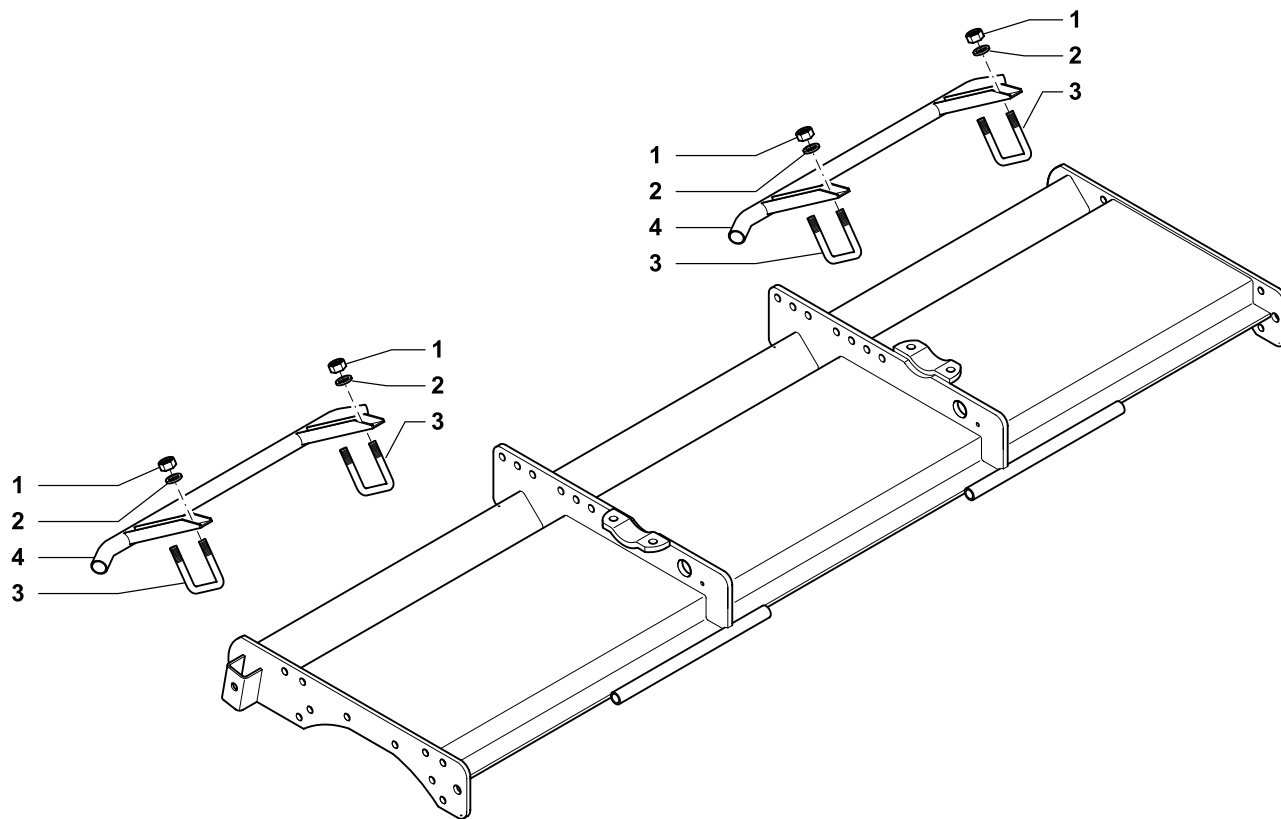
133.676

Rev.

01

1212

RIF.	CODICE	DESCRIZIONE	DENOMINATION	BEZEICHNUNG	DENOMINATION
1	010006	Rondella	Washer	Scheibe	Rondelle
2	334514	Morsetto	Clamp	Klemme	Etau
3	004072	Dado	Nut	Mutter	Ecrou
4	336410	Protezione	Protection	Schutz	Protection
5	099022	Tappo	Plug	Verschluss	Bouchon
6	013023	Spina	Pin	Stift	Goupille
7	223559	Perno	Pin	Zapfen	Axe
8	923541	Raschietto	Scraper	Schaber	Racloir
9	014149	Vite	Screw	Schraube	Vis
10	003059	Cuscinetto	Bearing	Kugellager	Roulement
11	010008	Rondella	Washer	Scheibe	Rondelle
12	004074	Dado	Nut	Mutter	Ecrou
13	015008	Cappello	Cover	Deckel	Couvercle
14	014221	Vite	Screw	Schraube	Vis
15	961592	Supporto	Support	Halterung	Support
16	004058	Dado	Nut	Mutter	Ecrou
17	011002	Grower	Grower	Federscheibe	Grower
18	961590	Tube	Hose	Schlauch	Tuyau
19	099017	Parapolvere	Dust cover	Staubdeckel	Cache anti poussière
20	003090	Cuscinetto	Bearing	Kugellager	Roulement
21	323596	Boccola	Bushing	Buchse	Douille
22	015005	Ruota	Wheel	Stutzrad	Roue
23	014245	Vite	Screw	Schraube	Vis
	<b>348603</b>	Kit ruote anteriori	Front wheels kit	Vordere Räder	Kit roues avant





PROTEZIONI ANTINFORTUNISTICHE • SAFETY PROTECTION  
SICHERHEITSSCHUTZ • PROTECTION DE SECURITE

Tav.  
Tab.  
Taf.

133.688

Rev.

01

1212

RIF.	CODICE	DESCRIZIONE	DENOMINATION	BEZEICHNUNG	DENOMINATION	
	1	004066	Dado	Nut	Mutter	Ecrou
	2	010004	Rondella	Washer	Scheibe	Rondelle
	3	913012	Cavallotto	U bolt	Bügelbolzen	Crampillon
<b>90</b>	4	662856	Protezione	Protection	Schuetz	Protection
<b>105</b>		662864	Protezione	Protection	Schuetz	Protection
<b>115</b>		662850	Protezione	Protection	Schuetz	Protection
<b>130</b>		662850	Protezione	Protection	Schuetz	Protection
<b>155</b>		662851	Protezione	Protection	Schuetz	Protection
<b>180</b>		662852	Protezione	Protection	Schuetz	Protection
<b>205</b>		662862	Protezione	Protection	Schuetz	Protection
<b>90</b>		978732	Kit protezione	Protection	Schuetz	Protection
<b>105</b>		978734	Kit protezione	Protection	Schuetz	Protection
<b>115</b>		978706	Kit protezione	Protection	Schuetz	Protection
<b>130</b>		978706	Kit protezione	Protection	Schuetz	Protection
<b>155</b>		978709	Kit protezione	Protection	Schuetz	Protection
<b>180</b>		978712	Kit protezione	Protection	Schuetz	Protection
<b>205</b>		978719	Kit protezione	Protection	Schuetz	Protection





1955

**Celli S.p.A.** Via Masetti, 32 - 47122 Forlì (Italy)  
Tel. 0543 794711 - Fax. 0543 794747  
[www.celli.it](http://www.celli.it)